



# *SangBleu* OG

3 collections, 25 fonts  
Technical Documentation



3 collections, 25 fonts, Latin alphabet

SangBleu OG, blue-blooded forever: The legacy lives on

# SangBleu OG Sans

# SangBleu OG Serif

SangBleu OG Condensed

SangBleu is the name both of a series of fonts and of a multi-disciplinary media platform/creative agency. The two were initiated together and share a common history, some of which is documented in the second issue of Type Life, “SangBleu OG Typeface Legacy”. Many SangBleu fonts debuted in the Sang Bleu magazine, a publication about fashion, tattoo culture, and more. First released in 2007, SangBleu and Romain have helped to lay the foundations of our library, and were met with enthusiasm by designers from all over the world. A decade later, we wrote the next chapter and launched the new SangBleu OG Typeface. On popular demand, the original SangBleu fonts are made available in an updated form. Now known as SangBleu OG, the typeface comprises three collections; SangBleu OG Serif, SangBleu OG Sans, and SangBleu OG Condensed.



*MASTERS*

MONSTER

# SangBleu OG Typeface Overview



SangBleu OG Condensed + SangBleu OG Serif + SangBleu OG Sans

---



## SangBleu OG Typeface Overview



SangBleu OG Sans 12 fonts Latin

---

SangBleu OG Sans Hairline

*SangBleu OG Sans Hairline Italic*

SangBleu OG Sans Light

*SangBleu OG Sans Light Italic*

SangBleu OG Sans Regular

*SangBleu OG Sans Regular Italic*

SangBleu OG Sans Medium

*SangBleu OG Sans Medium Italic*

SangBleu OG Sans Bold

*SangBleu OG Sans Bold Italic*

**SangBleu OG Sans Black**

***SangBleu OG Sans Black Italic***



SangBleu OG Serif 12 fonts Latin

---

SangBleu OG Serif Hairline

*SangBleu OG Serif Hairline Italic*

SangBleu OG Serif Light

*SangBleu OG Serif Light Italic*

SangBleu OG Serif Regular

*SangBleu OG Serif Regular Italic*

SangBleu OG Serif Medium

*SangBleu OG Serif Medium Italic*

SangBleu OG Serif Bold

*SangBleu OG Serif Bold Italic*

**SangBleu OG Serif Black**

***SangBleu OG Serif Black Italic***

# SangBleu OG Typeface Overview



SangBleu OG Condensed 1 font Latin

---

SangBleu OG Condensed Hairline

SangBleu OG  
Sans

1 collection, 12 fonts, Latin

Hairline Light Regular Medium **Bold Black**  
*Italic Italic Italic Italic Italic Italic*

# SangBleu OG Sans Glyph Overview



## Uppercase (Latin)

ABCDEFGHIJKLMNOPQ  
RSTUVWXYZ  
À Á Â Ã Ä Å Æ Ç È É Ê Ë  
Ď ě Ğ Ğ Ğ Ğ Ğ Ğ Ğ Ğ Ğ Ğ  
Ī ĩ Ĵ ĵ Ķ ķ ĸ Ĺ Ļ Ľ Ŀ  
Ō ō Ő ő Œ œ Ù ú Ū ū  
Ű ű Ų ų Ŵ ŵ Ŷ ŷ Ÿ Ź ź  
Ź ƀ

## Lowercase (Latin)

abcdefghijklmnopqrstu  
vwxyz  
à á â ã ä å æ ç è é ê ë  
ě ě ğ ğ ğ ğ ğ ğ ğ ğ ğ ğ  
ñ ò ó ô õ ö ø ő ò ò ò ò ò  
ù ú û ü ū ŵ Ŷ ŷ Ÿ Ź ź  
ž ƀ

## Figures

1234567890

## Fractions

1/2 1/3 1/4 1/5 1/6 1/7 1/8 1/9 1/10 2/3 2/5 3/4 3/5 3/8  
4/5 5/6 5/8 7/8 1/0 0/00

## Standard Ligatures (Latin)

ff fi ffi fl ffl

## Punctuation

! ? ; \* & ( / ) , - - - \_ . : ; ... · @ [ \ ]  
{ } | « » < > “ ” „ • † ‡ ”

## Currencies

\$ £ ¢ € ¥

## Symbols

© ® ™ № § ¶ ª ° # °

## Mathematical Signs

+ < = > × − ÷ ± ≤ ≥ ≠ ~ ≈ ^ /



# SangBleu OG Sans OpenType features



## All Caps Punctuation

N!?:i; N!?:i; N---. N---.  
<N> <N> «N» «N» (N) (N)  
[N] [N] {N} {N} N| N|

By selecting the All Caps feature, the punctuation will be automatically adjusted in height, weight and spacing to match the Capitals.

## All Caps Mathematical Signs

N+-=x±<>≤≥≠÷≈  
N+-=x±<>≤≥≠÷≈

By selecting the All Caps feature, the mathematical signs will be automatically adjusted in height, weight and spacing to match the Capitals.

## OT Figures

- A. Hn1234567890
- B. Hn1234567890
- C. Hn1234567890

There are 2 different styles of figures:  
A. Default Figures  
B. OT All Caps Figures  
C. OT Proportional Oldstyle Figures

## Numerator

N1234567890 N<sup>1234567890</sup>

## Denominator

N1234567890 N<sub>1234567890</sub>

## Fractions

13000/93270 <sup>13000</sup>/<sub>93270</sub>

## Superior

N1234567890 N<sup>1234567890</sup>

## Inferior

N1234567890 N<sub>1234567890</sub>

By selecting one of the Superscript/Superior, Subscript/Inferior, Numerator or Denominator features in the Character window > OpenType functions, the characters and figures will be automatically substituted by their adequate counterparts, specifically designed to match the font in size and weight, rather than being scaled down by the software.



Bold Italic 110 pt

*SunRiderBelieve*

Regular 57 pt

Everything was out of my control  
rocked me back & forth as the  
taking over reality. My body wa

Light 27 pt

From morning to evening my day ran like clockwork, to a schedule that  
surely satisfy the courtiers, for before they complained that they never

SangBleu OG  
Serif

1 collection, 12 fonts, Latin

Hairline Light Regular Medium Bold Black  
*Italic Italic Italic Italic Italic Italic*

# SangBleu OG Serif Glyph Overview



## Uppercase (Latin)

ABCDEFGHIJKLMNOPQRSTUVWXYZ  
À Á Â Ã Ä Å Æ Ç È É Ê Ë Ì Í Î Ï Ñ Ò Ó Ô Õ Ö Ø Ù Ú Û Ü Ý Þ ß à á â ã ä å æ ç è é ê ë ì í î ï ñ ò ó ô õ ö ø ù ú û ü ý þ ÿ ž

## Lowercase (Latin)

abcdefghijklmnopqrstuvw  
xyz  
à á â ã ä å æ ç è é ê ë ì í î ï ñ ò ó ô õ ö ø ù ú û ü ý þ ÿ ž

## Figures

1234567890

## Fractions

1/2 1/3 1/4 1/5 1/6 1/7 1/8 1/9 1/10 2/3 2/5 3/4 3/5 3/8  
4/5 5/6 5/8 7/8 1/0 0/00

## Standard Ligatures (Latin)

ff fi ffi fl ffi

## Punctuation

! ? ; : \* & ( / ) , - - - \_ . . . @ [ \ ] { | } !  
« » < > “ ” „ • † ‡ ”

## Currencies

\$ £ ¢ € ¥

## Symbols

© ® ™ N<sup>o</sup> S ¶ <sup>a o</sup> # °

## Mathematical Signs

+ < = > × − ÷ ± ≤ ≥ ≠ ~ ≈ ^ /

# SangBleu OG Serif OpenType features



## OT Stylistic Set 1 : Standard Serif (Latin)

ABCDEFGHIJKLMNOPQRSTUVWXYZ

RSTUVWXYZ

abcdefghijklmnopqrstuvw

xyz

## All Caps Punctuation

N!?!; N!?!; N- - - . N- - - .

<N> <N> «N» «N» (N) (N)

[N] [N] {N} {N} N|| N||

## All Caps Mathematical Signs

N+-=x±<>≤≥≠÷≈

N+-=x±<>≤≥≠÷≈

## OT Figures

A. Hn1234567890

B. Hn1234567890

C. Hn1234567890

SangBleu OG Serif offers one Stylistic Set. These alternate characters could be automatically triggered via the Stylistic Set panel accessible in the Character window > OpenType menu.

By selecting the All Caps feature, the punctuation will be automatically adjusted in height, weight and spacing to match the Capitals.

By selecting the All Caps feature, the mathematical signs will be automatically adjusted in height, weight and spacing to match the Capitals.

There are 2 different styles of figures:  
A. Default Figures  
B. OT All Caps Figures  
C. OT Proportional Oldstyle Figures

## Numerator

N1234567890 N<sup>1234567890</sup>

## Denominator

N1234567890 N<sub>1234567890</sub>

## Fractions

13000/93270 <sup>13000</sup>/<sub>93270</sub>

## Superior

N1234567890 N<sup>1234567890</sup>

## Inferior

N1234567890 N<sub>1234567890</sub>

By selecting one of the Superscript/Superior, Subscript/Inferior, Numerator or Denominator features in the Character window > OpenType functions, the characters and figures will be automatically substituted by their adequate counterparts, specifically designed to match the font in size and weight, rather than being scaled down by the software.

Hairline 72 pt

NightWalkers

Bold 22 pt

**No, the head of a stunning man, so bright, he shined like diamonds in the sun, it was the most handsomely haunting face she ever saw, she thought it was her god himself. It was so strange for her to see his face and then a strange land so beautiful it could not be of this world. Clearly convinced she was gifted with a glimpse of Paradise. She tells this story to all who will listen.**

Medium 16 pt

**No, the head of a stunning man, so bright, he shined like diamonds in the sun, it was the most handsomely haunting face she ever saw, she thought it was her god himself. It was so strange for her to see his face and then a strange land so beautiful it could not be of this world. Clearly convinced she was gifted with a glimpse of Paradise. She tells this story to all who will listen.**

Regular 20 pt

No, the head of a stunning man, so bright, he shined like diamonds in the sun, it was the most handsomely haunting face she ever saw, she thought it was her god himself. It was so strange for her to see his face and then a strange land so beautiful it could not be of this world. Clearly convinced she was gifted with a glimpse of Paradise. She tells this story to all who will listen. She describes it with such detail, it's as if she was there. She knew things about Versailles only the King himself knew.

Regular 12 pt

No, the head of a stunning man, so bright, he shined like diamonds in the sun, it was the most handsomely haunting face she ever saw, she thought it was her god himself. It was so strange for her to see his face and then a strange land so beautiful it could not be of this world. Clearly convinced she was gifted with a glimpse of Paradise. She tells this story to all who will listen. She describes it with such detail, it's as if she was there. She knew things about Versailles only the King himself knew.

Light 12 pt

No, the head of a stunning man, so bright, he shined like diamonds in the sun, it was the most handsomely haunting face she ever saw, she thought it was her god himself. It was so strange for her to see his face and then a strange land so beautiful it could not be of this world. Clearly convinced she was gifted with a glimpse of Paradise. She tells this story to all who will listen. She describes it with such detail, it's as if she was there. She knew things about Versailles only the King himself knew. Her visions were revealed to be premonitions of things to come. His Majesty is completely infatuated with her.

SangBleu OG Condensed

1 collection, 1 font, Latin

Linotype

# SangBleu OG Condensed Glyph Overview



## Uppercase (Latin)

---

A B C D E F G H I J K L M N O P Q R S T U V W X Y Z

À Á Â Ã Ä Å Æ Ç È É Ê Ë Ì Í Î Ï Ñ Ò Ó Ô Õ Ö × Ø Ù Ú Û Ü Ý Þ ß à á â ã

ä å æ ç è é ê ë ì í î ï ð ñ ò ó ô õ ö ø ù ú û ü ý þ ÿ

## Lowercase (Latin)

---

a b c d e f g h i j k l m n o p q r s t u v w x y z

À Á Â Ã Ä Å Æ Ç È É Ê Ë Ì Í Î Ï Ñ Ò Ó Ô Õ Ö × Ø Ù Ú Û Ü Ý Þ ß à á â ã

ä å æ ç è é ê ë ì í î ï ð ñ ò ó ô õ ö ø ù ú û ü ý þ ÿ

## Figures

---

1 2 3 4 5 6 7 8 9 0

## Fractions

---

1/ 2/ 3/ 4/ 5/ 6/ 7/ 8/ 9/ 10/ 11/ 12/ 13/ 14/ 15/ 16/ 17/ 18/ 19/ 20/ 21/ 22/ 23/ 24/ 25/ 26/ 27/ 28/ 29/ 30/ 31/ 32/ 33/ 34/ 35/ 36/ 37/ 38/ 39/ 40/ 41/ 42/ 43/ 44/ 45/ 46/ 47/ 48/ 49/ 50/ 51/ 52/ 53/ 54/ 55/ 56/ 57/ 58/ 59/ 60/ 61/ 62/ 63/ 64/ 65/ 66/ 67/ 68/ 69/ 70/ 71/ 72/ 73/ 74/ 75/ 76/ 77/ 78/ 79/ 80/ 81/ 82/ 83/ 84/ 85/ 86/ 87/ 88/ 89/ 90/ 91/ 92/ 93/ 94/ 95/ 96/ 97/ 98/ 99/ 100/

## Standard Ligatures (Latin)

---

f f f f f f f f

## Punctuation

---

! " # \$ % & ' ( ) \* + , - . / : ; < = > ? @ [ \ ] ^ \_ ` { | } ~ ¡ ¢ £ ¤ ¥ ¦ § ¨ © ª « ¬ ® ¯ ° ± ² ³ ´ µ ¶ · ¸ ¹ º » ¼ ½ ¾ ¿

## Currencies

---

§ £ ¢ ¥

## Symbols

---

© ® ™ ℹ ☾ § ¶ ¨ °

## Mathematical Signs

---

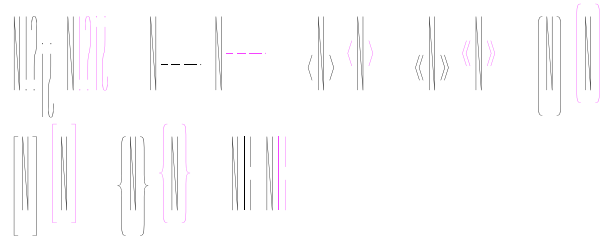
+ < = > × ÷ ± ≤ ≥ ≠ ~ ≈



# SangBleu OG Condensed OpenType features



## All Caps Punctuation



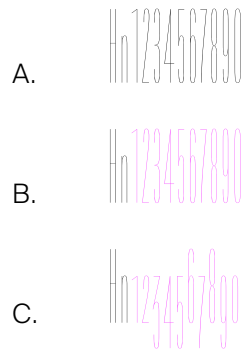
By selecting the All Caps feature, the punctuation will be automatically adjusted in height, weight and spacing to match the Capitals.

## All Caps Mathematical Signs



By selecting the All Caps feature, the mathematical signs will be automatically adjusted in height, weight and spacing to match the Capitals.

## OT Figures



There are 2 different styles of figures:  
A. Default Figures  
B. OT All Caps Figures  
C. OT Proportional Oldstyle Figures

## Numerator



By selecting one of the Superscript/Superior, Subscript/Inferior, Numerator or Denominator features in the Character window > OpenType functions, the characters and figures will be automatically substituted by their adequate counterparts, specifically designed to match the font in size and weight, rather than being scaled down by the software.

## Denominator



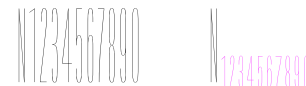
## Fractions



## Superior



## Inferior





Hairline 500 pt

K N S R U L N S

Hairline 100 pt

No, the head of a stunn

Hairline 50 pt

No, the head of a stunning man, so bright, he

Hairline 20 pt

No, the head of a stunning man, so bright, he shined like diamonds in the sun, it was the most handsomely haunting  
It was so strange for her to see his face and then a strange land so beautiful it could not be of this world. Clearly  
tells this story to all who will listen. She describes it with such detail, it's as if she was there. She knew things a  
were revealed to be premonitions of things to come. His Majesty is completely infatuated with the savage. No, the  
in the sun, it was the most handsomely haunting face she ever saw, she thought it was her god himself. It was so  
so beautiful it could not be of this world. Clearly convinced she was gifted with a glimpse of Paradise. She tells th



Information about font format, languages and credits are available  
in the *Technical Information* section of each font page.

All our styles are available as Trial versions. You can easily and legally  
test them on your computer, within your own design.

For any assistance, please visit [swisstypefaces.com/support](https://swisstypefaces.com/support)  
or get in touch with us via [contact@swisstypefaces.com](mailto:contact@swisstypefaces.com)