

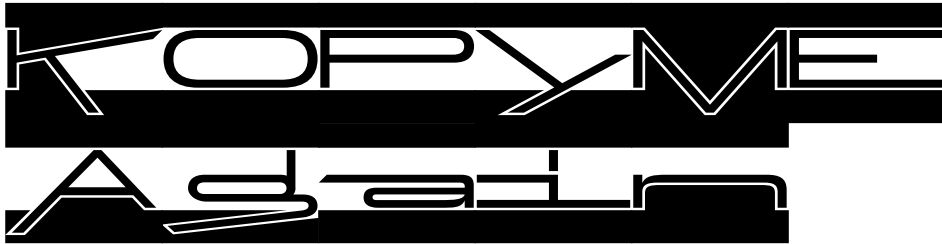


KOPYME

1 font  
Technical Documentation



1 font, Latin



KOPYME

KOPYME is a brutalist typeface with monospaced characters of monolinear stroke width and extra wide proportions. With the emphasis on extended horizontals, it channels a specifically Swiss lettering tradition that harkens back to works by Walter Käch from the 1930s and 1940s, and also materialized in the Haas Horizontal typeface by Helvetica designer Max Miedinger. In a futuristic variation on this theme, Swiss Typefaces introduces disturbingly top-heavy shapes with angular terminals, see 'C' or 'S'. KOPYME's strongly horizontal nature is offset by diagonals that shoot across the glyph space like laser beams. In letters like 'M' or 'Y', they crash through the baseline, extending the underlying grid by a fourth underground level, and adding to the typeface's kinetic energy.

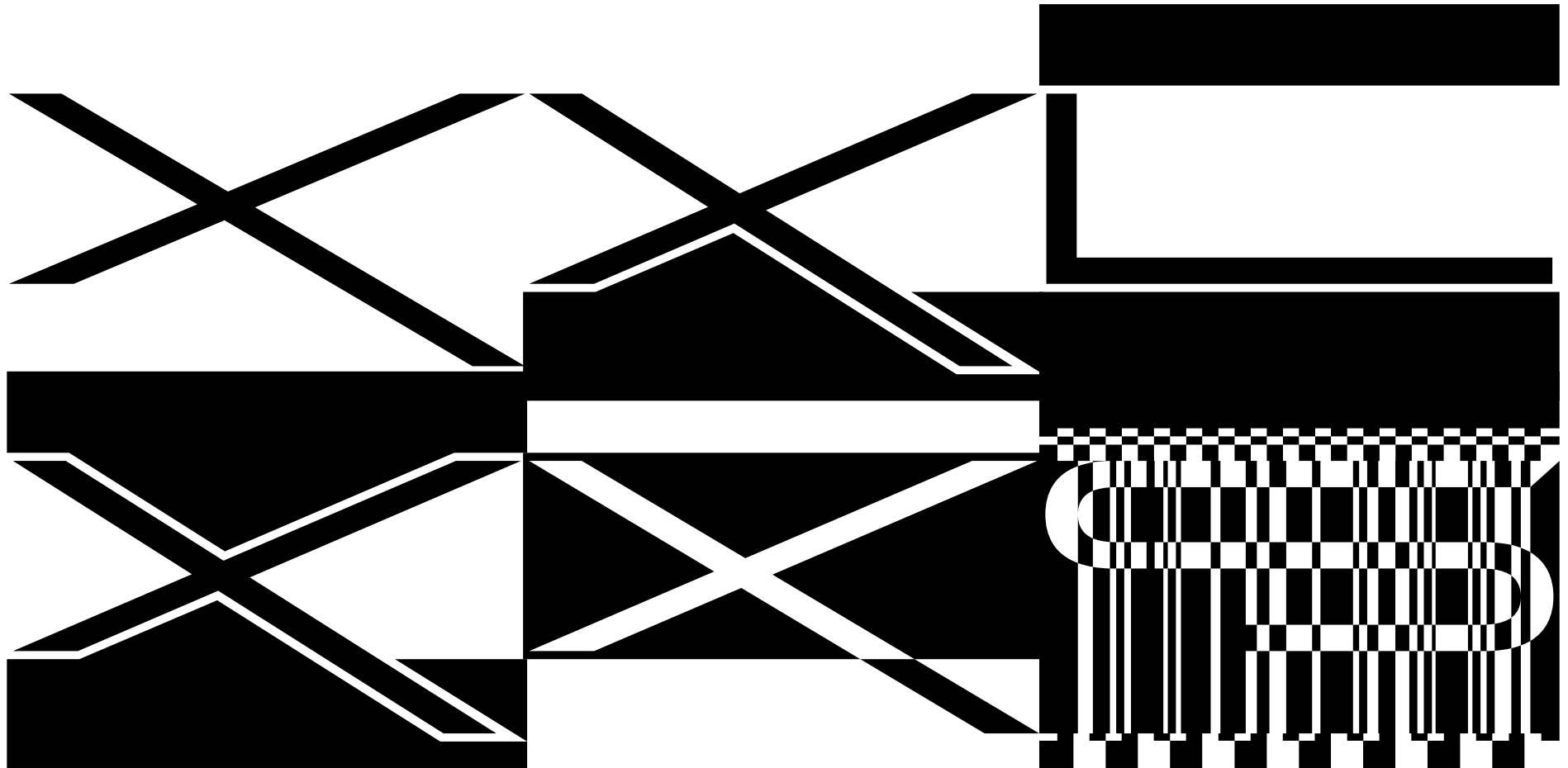
You think this is fun? Wait till you've seen the OpenType extras. Switch on Stylistic Set 1 to pour a concrete base for your words: a fat underline that also creeps into the open counters. Activate Set 2, and all space above the cap height is filled up. Set 3 is a combination, with the characters locked between two solid rails. Change to Set 4: Here the center is filled and the letters are shown in negative. Only a few descenders manage to escape the dark mode. Last but not least, select Set 5 to see your words shredded by a stripe pattern – now you know how to typeset captchas in proper style.

The typeface has a full character set including upper- and lowercase, accented characters, punctuation, and arrows. The special features are available for basic letters (Aa–Zz) and numerals. For the time being, it comes in a single style – KOPYME, Again.

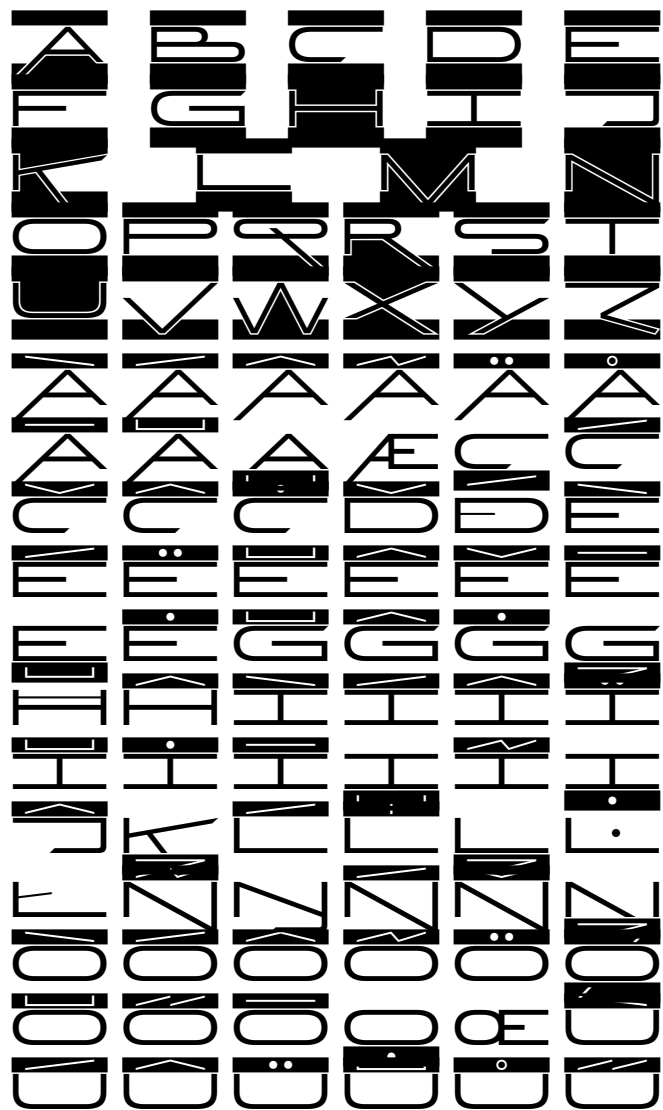


## KOPYME OpenType Stylistic Sets Alternates

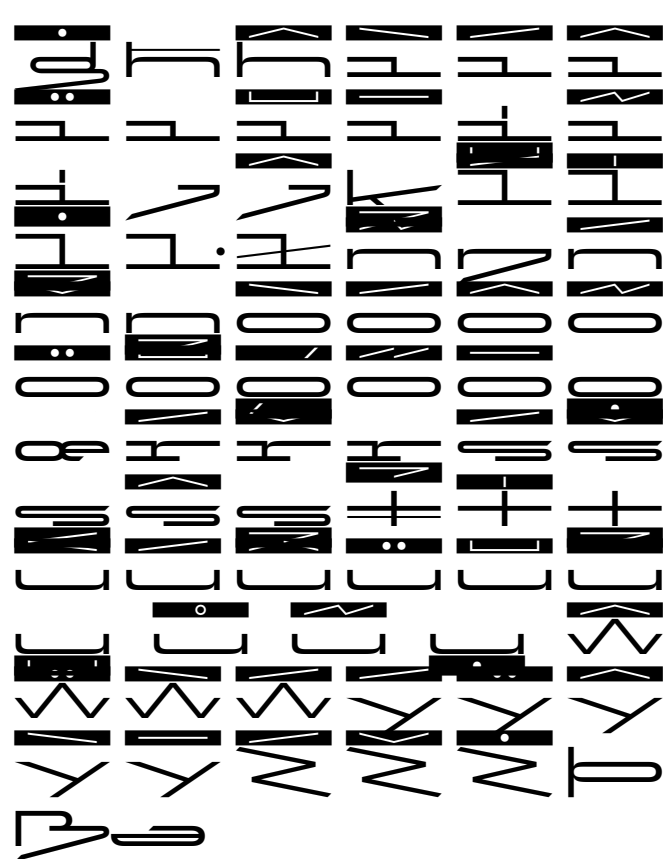
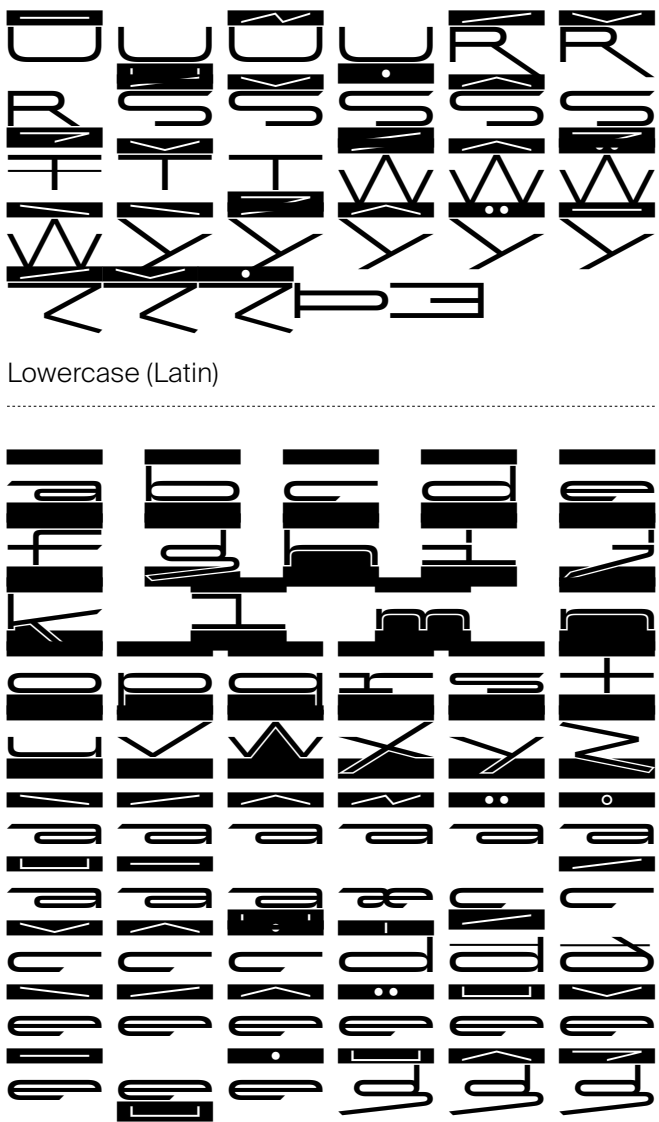
---



Uppercase (Latin)



Lowercase (Latin)



Figures



# KOPYME Glyph Overview



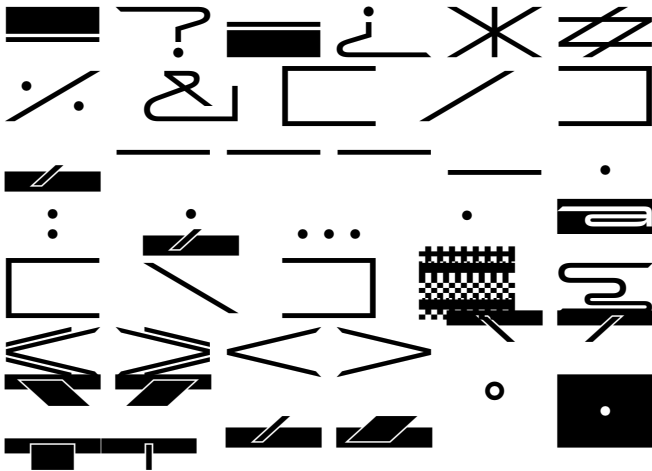
## Standard Ligatures (Latin)

ff fi fa

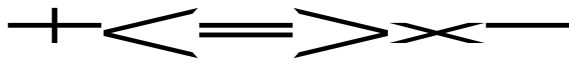
## Symbol



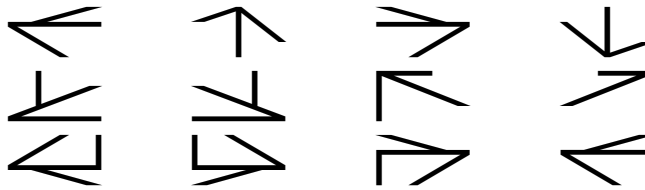
## Punctuation



## Mathematical Signs



## Arrows



## Currencies

USD  
GBP  
EUR



OT Stylistic Set 1 : Down

A B C D E  
F G H I J  
K L M N O  
P Q R S T U  
V W X Y Z  
[ \ ] ^ \_ `   
a b c d e  
f g h i j  
k l m n o  
p q r s t  
u v w x y z  
[ \ ] ^ \_ `   
a b c d e  
f g h i j  
k l m n o  
p q r s t  
u v w x y z

OT Stylistic Set 2 : Up

A B C D E  
F G H I J  
K L M N O  
P Q R S T U  
V W X Y Z  
[ \ ] ^ \_ `   
a b c d e  
f g h i j  
k l m n o  
p q r s t  
u v w x y z  
[ \ ] ^ \_ `   
a b c d e  
f g h i j  
k l m n o  
p q r s t  
u v w x y z

OT Stylistic Set 3 : DownUp

A B C D E  
F G H I J  
K L M N O  
P Q R S T U  
V W X Y Z  
[ \ ] ^ \_ `   
a b c d e  
f g h i j  
k l m n o  
p q r s t  
u v w x y z  
[ \ ] ^ \_ `   
a b c d e  
f g h i j  
k l m n o  
p q r s t  
u v w x y z



OT Stylistic Set 4 : Center

---

A B C D E F  
G H I J K L  
M N O P Q R  
S T U V W X  
Y Z

a b c d e f  
g h i j k l  
m n o p q r  
s t u v w x  
y z

1 2 3 4 5 6  
7 8 9 0

OT Stylistic Set 5 : Glitch

---

A B C D E F  
G H I J K L  
M N O P Q R  
S T U V W X  
Y Z

a b c d e f  
g h i j k l  
m n o p q r  
s t u v w x  
y z

1 2 3 4 5 6  
7 8 9 0

Again 83 pt

SUBJECT

Again 40 pt

EVERYTHING  
OUT OF THE  
THROAT.  
HOCKEY IS A

Again 17 pt

From morning to  
evening my day ran  
like clockwork to a  
schedule that would





Information about font format, languages and credits are available in the *Technical Information* section of each font page.

All our styles are available as Trial versions. You can easily and legally test them on your computer, within your own design.

For any assistance, please visit [swisstypefaces.com/support](https://swisstypefaces.com/support) or get in touch with us via [contact@swisstypefaces.com](mailto:contact@swisstypefaces.com)