



SangBleu OG

3 collections, 21 fonts
Technical Documentation



3 collections, 21 fonts, Latin alphabet

SangBleu OG, blue-blooded forever: The legacy lives on

SangBleu OG Sans

SangBleu OG Serif

SangBleu OG Condensed

SangBleu is the name both of a series of fonts and of a multi-disciplinary media platform/creative agency. The two were initiated together and share a common history, some of which is documented in the second issue of Type Life, “SangBleu OG Typeface Legacy”. Many SangBleu fonts debuted in the Sang Bleu magazine, a publication about fashion, tattoo culture, and more. First released in 2007, SangBleu and Romain have helped to lay the foundations of our library, and were met with enthusiasm by designers from all over the world. A decade later, we wrote the next chapter and launched the new SangBleu OG Typeface. On popular demand, the original SangBleu fonts are made available in an updated form. Now known as SangBleu OG, the typeface comprises three collections; SangBleu OG Serif, SangBleu OG Sans, and SangBleu OG Condensed.



MASTERS

MONSTER

SangBleu OG Typeface Overview



SangBleu OG Condensed + SangBleu OG Serif + SangBleu OG Sans



SangBleu OG Typeface Overview



SangBleu OG Sans 10 fonts Latin

SangBleu OG Sans Hairline

SangBleu OG Sans Hairline Italic

SangBleu OG Sans Light

SangBleu OG Sans Light Italic

SangBleu OG Sans Regular

SangBleu OG Sans Regular Italic

SangBleu OG Sans Medium

SangBleu OG Sans Medium Italic

SangBleu OG Sans Bold

SangBleu OG Sans Bold Italic



SangBleu OG Serif 10 fonts Latin

SangBleu OG Serif Hairline

SangBleu OG Serif Hairline Italic

SangBleu OG Serif Light

SangBleu OG Serif Light Italic

SangBleu OG Serif Regular

SangBleu OG Serif Regular Italic

SangBleu OG Serif Medium

SangBleu OG Serif Medium Italic

SangBleu OG Serif Bold

SangBleu OG Serif Bold Italic

SangBleu OG Typeface Overview



SangBleu OG Condensed 1 font Latin

SangBleu OG Condensed Hairline

SangBleu OC
Sans

1 collection, 10 fonts, Latin

Hairline Light Regular Medium Bold
Italic Italic Italic Italic Italic

SangBleu OG Sans Glyph Overview



Uppercase (Latin)

ABCDEFGHIJKLMNOPQ
RSTUVWXYZ
À Á Â Ã Ä Å Æ Ç È É Ê Ë
Ď ě Ğ ħ Ì Í Î Ï Ĵ Ķ Ĺ Ľ Ł Ń Ņ Ñ Ò Ó
Ô Õ Ö Ø Œ Ù Ú Û Ü
Ů Ű Ū Ŭ Ů Ŕ Ŗ Ř Ś Ŝ Ţ Ŧ
Ŵ Ŷ Ÿ Ź Ż Þ

Lowercase (Latin)

abcdefghijklmnopqrstu
vwxyz
à á â ã ä å æ ç è é ê ë
đ ě ğ ħ ì í î ï ĵ ķ ļ ł Ń Ņ ñ ò ó
ô õ ö ø œ ř ŕ ŝ ŧ ŧ ŧ
ù ú û ü ū Ů Ű Ū Ŭ Ů Ŕ Ŗ Ř Ś Ŝ Ţ Ŧ
Ŵ Ŷ Ÿ Ź Ż Þ

Figures

1234567890

Fractions

1/2 1/3 1/4 1/5 1/6 1/7 1/8 1/9 1/10 2/3 2/5 3/4 3/5 3/8
4/5 5/6 5/8 7/8 1/0 0/00

Standard Ligatures (Latin)

ff fi ffi fl ffl

Punctuation

! ? ; * & (/) , - - - _ . : ; ... · @ [\]
{ } | « » < > " " " " ' ' ' ' • † ‡ " "

Currencies

\$ £ ¢ € ¥

Symbols

© ® ™ № § ¶ ª ° # °

Mathematical Signs

+ < = > × - ÷ ± ≤ ≥ ≠ ~ ≈ ^ /

SangBleu OG Sans OpenType features



All Caps Punctuation

N!?:i¿ N!?:i¿ N---. N---.
<N> <N> «N» «N» (N) (N)
[N] [N] {N} {N} N|! N|!

By selecting the All Caps feature, the punctuation will be automatically adjusted in height, weight and spacing to match the Capitals.

All Caps Mathematical Signs

N+-=x±<>≤≥#÷≈
N+-=x±<>≤≥#÷≈

By selecting the All Caps feature, the mathematical signs will be automatically adjusted in height, weight and spacing to match the Capitals.

OT Figures

A. Hn1234567890
B. Hn1234567890
C. Hn1234567890

There are 2 different styles of figures:
A. Default Figures
B. OT All Caps Figures
C. OT Proportional Oldstyle Figures

Numerator

N1234567890 N¹²³⁴⁵⁶⁷⁸⁹⁰

Denominator

N1234567890 N₁₂₃₄₅₆₇₈₉₀

Fractions

13000/93270 ¹³⁰⁰⁰/₉₃₂₇₀

Superior

N1234567890 N¹²³⁴⁵⁶⁷⁸⁹⁰

Inferior

N1234567890 N₁₂₃₄₅₆₇₈₉₀

By selecting one of the Superscript/Superior, Subscript/Inferior, Numerator or Denominator features in the Character window > OpenType functions, the characters and figures will be automatically substituted by their adequate counterparts, specifically designed to match the font in size and weight, rather than being scaled down by the software.



Bold Italic 110 pt

SunRiderBelieve

Regular 57 pt

Everything was out of my control
rocked me back & forth as the
taking over reality. My body wa

Light 27 pt

From morning to evening my day ran like clockwork, to a schedule that
surely satisfy the courtiers, for before they complained that they never

SangBleu OG
Serif

1 collection, 10 fonts, Latin

Hairline Light Regular Medium Bold
Italic Italic Italic Italic Italic

SangBleu OG Serif Glyph Overview



Uppercase (Latin)

ABCDEFGHIJKLMNOPQRSTUVWXYZ
À Á Â Ã Ä Å Æ Ç È É Ê Ë Ì Í Î Ï Ñ Ò Ó Ô Õ Ö Ø Ù Ú Û Ü Ý Þ ß à á â ã ä å æ ç è é ê ë ì í î ï ñ ò ó ô õ ö ø ù ú û ü ý þ ÿ ž

Lowercase (Latin)

abcdefghijklmnopqrstuvw
xyz
à á â ã ä å æ ç è é ê ë ì í î ï ñ ò ó ô õ ö ø ù ú û ü ý þ ÿ ž

Figures

1234567890

Fractions

1/2 1/3 1/4 1/5 1/6 1/7 1/8 1/9 1/10 2/3 2/5 3/4 3/5 3/8
4/5 5/6 5/8 7/8 1/0 0/00

Standard Ligatures (Latin)

ff fi ffi fl ffi

Punctuation

! ? ; * & (/) , - - - _ . : ; ... @ [\] { | } !
« » < > “ ” „ • † ‡ ”

Currencies

\$ £ ¢ € ¥

Symbols

© ® ™ № § ¶ ¯ ° # °

Mathematical Signs

+ < = > × - ÷ ± ≤ ≥ ≠ ∼ ≈ ^ /

SangBleu OG Serif OpenType features



OT Stylistic Set 1 : Standard Serif (Latin)

ABCDEFGHIJKLMNOPQRSTUVWXYZ

RSTUVWXYZ

abcdefghijklmnopqrstuvw

xyz

All Caps Punctuation

N!?!; N!?!; N- - - . N- - - .

<N> <N> «N» «N» (N) (N)

[N] [N] {N} {N} N|| N||

All Caps Mathematical Signs

N+-=x±<>≤≥≠÷≈

N+-=x±<>≤≥≠÷≈

OT Figures

A. Hn1234567890

B. Hn1234567890

C. Hn1234567890

SangBleu OG Serif offers one Stylistic Set. These alternate characters could be automatically triggered via the Stylistic Set panel accessible in the Character window > OpenType menu.

By selecting the All Caps feature, the punctuation will be automatically adjusted in height, weight and spacing to match the Capitals.

By selecting the All Caps feature, the mathematical signs will be automatically adjusted in height, weight and spacing to match the Capitals.

There are 2 different styles of figures:
A. Default Figures
B. OT All Caps Figures
C. OT Proportional Oldstyle Figures

Numerator

N1234567890 N¹²³⁴⁵⁶⁷⁸⁹⁰

Denominator

N1234567890 N₁₂₃₄₅₆₇₈₉₀

Fractions

13000/93270 13000/93270

Superior

N1234567890 N¹²³⁴⁵⁶⁷⁸⁹⁰

Inferior

N1234567890 N₁₂₃₄₅₆₇₈₉₀

By selecting one of the Superscript/Superior, Subscript/Inferior, Numerator or Denominator features in the Character window > OpenType functions, the characters and figures will be automatically substituted by their adequate counterparts, specifically designed to match the font in size and weight, rather than being scaled down by the software.

Hairline 72 pt

NightWalkers

Bold 22 pt

No, the head of a stunning man, so bright, he shined like diamonds in the sun, it was the most handsomely haunting face she ever saw, she thought it was her god himself. It was so strange for her to see his face and then a strange land so beautiful it could not be of this world. Clearly convinced she was gifted with a glimpse of Paradise. She tells this story to all who will listen.

Medium 16 pt

No, the head of a stunning man, so bright, he shined like diamonds in the sun, it was the most handsomely haunting face she ever saw, she thought it was her god himself. It was so strange for her to see his face and then a strange land so beautiful it could not be of this world. Clearly convinced she was gifted with a glimpse of Paradise. She tells this story to all who will listen.

Regular 20 pt

No, the head of a stunning man, so bright, he shined like diamonds in the sun, it was the most handsomely haunting face she ever saw, she thought it was her god himself. It was so strange for her to see his face and then a strange land so beautiful it could not be of this world. Clearly convinced she was gifted with a glimpse of Paradise. She tells this story to all who will listen. She describes it with such detail, it's as if she was there. She knew things about Versailles only the King himself knew.

Regular 12 pt

No, the head of a stunning man, so bright, he shined like diamonds in the sun, it was the most handsomely haunting face she ever saw, she thought it was her god himself. It was so strange for her to see his face and then a strange land so beautiful it could not be of this world. Clearly convinced she was gifted with a glimpse of Paradise. She tells this story to all who will listen. She describes it with such detail, it's as if she was there. She knew things about Versailles only the King himself knew.

Light 12 pt

No, the head of a stunning man, so bright, he shined like diamonds in the sun, it was the most handsomely haunting face she ever saw, she thought it was her god himself. It was so strange for her to see his face and then a strange land so beautiful it could not be of this world. Clearly convinced she was gifted with a glimpse of Paradise. She tells this story to all who will listen. She describes it with such detail, it's as if she was there. She knew things about Versailles only the King himself knew. Her visions were revealed to be premonitions of things to come. His Majesty is completely infatuated with her.

SangBleu OG Condensed

1 collection, 1 font, Latin

Linotype

SangBleu OG Condensed Glyph Overview



Uppercase (Latin)

A B C D E F G H I J K L M N O P Q R S T U V W X Y Z

À Á Â Ã Ä Å Æ Ç È É Ê Ë Ì Í Î Ï Ñ Ò Ó Ô Õ Ö Ø Ù Ú Û Ü Ý Þ ß à á â ã

ä å æ ç è é ê ë ì í î ï ñ ò ó ô õ ö ø ù ú û ü ý þ ÿ

Lowercase (Latin)

a b c d e f g h i j k l m n o p q r s t u v w x y z

À Á Â Ã Ä Å Æ Ç È É Ê Ë Ì Í Î Ï Ñ Ò Ó Ô Õ Ö Ø Ù Ú Û Ü Ý Þ ß à á â ã

ä å æ ç è é ê ë ì í î ï ñ ò ó ô õ ö ø ù ú û ü ý þ ÿ

Figures

1 2 3 4 5 6 7 8 9 0

Fractions

1/ 1/ 1/ 1/ 1/ 1/ 1/ 1/ 1/ 2/ 2/ 3/ 3/ 4/ 5/ 5/ 7/ 1/ 0/ 0/
2/ 3/ 4/ 5/ 6/ 7/ 8/ 9/ 10/ 13/ 15/ 14/ 15/ 18/ 15/ 16/ 18/ 7/ 10/ 100

Standard Ligatures (Latin)

f f f f f f f f

Punctuation

! ? * ([] , --- : ; - @ [\] () { } « » < > " ' " " " " |

Currencies

\$ £ ¢ ¥

Symbols

© ® ™ ¶ ° ™ ° ™ ° ™ ° ™ °

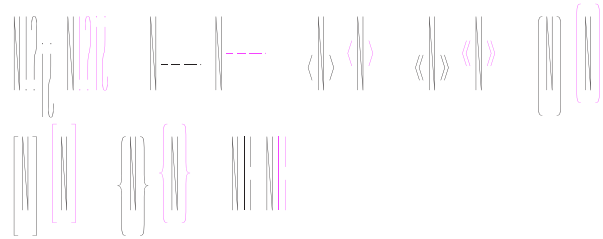
Mathematical Signs

+ < > × ÷ ± ≤ ≥ ≠ ~ ≈ |

SangBleu OG Condensed OpenType features



All Caps Punctuation



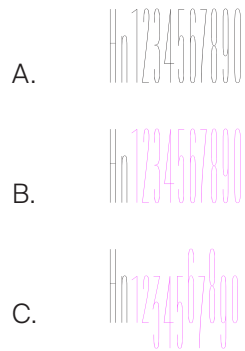
By selecting the All Caps feature, the punctuation will be automatically adjusted in height, weight and spacing to match the Capitals.

All Caps Mathematical Signs



By selecting the All Caps feature, the mathematical signs will be automatically adjusted in height, weight and spacing to match the Capitals.

OT Figures



There are 2 different styles of figures:
A. Default Figures
B. OT All Caps Figures
C. OT Proportional Oldstyle Figures

Numerator



By selecting one of the Superscript/Superior, Subscript/Inferior, Numerator or Denominator features in the Character window > OpenType functions, the characters and figures will be automatically substituted by their adequate counterparts, specifically designed to match the font in size and weight, rather than being scaled down by the software.

Denominator



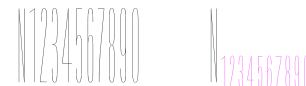
Fractions



Superior



Inferior





Hairline 500 pt

K N S R U L N S

Hairline 100 pt

No, the head of a stunn

Hairline 50 pt

No, the head of a stunning man, so bright, he

Hairline 20 pt

No, the head of a stunning man, so bright, he shined like diamonds in the sun, it was the most handsomely haunting
It was so strange for her to see his face and then a strange land so beautiful it could not be of this world. Cleo
tells this story to all who will listen. She describes it with such detail, it's as if she was there. She knew things a
were revealed to be premonitions of things to come. His Majesty is completely infatuated with the savage. No, the
in the sun, it was the most handsomely haunting face she ever saw, she thought it was her god himself. It was so
so beautiful it could not be of this world. Clearly convinced she was gifted with a glimpse of Paradise. She tells th

SangBleu OG Typeface Information

Supported languages

Latin: Abenaki, Afaan Oromo, Afar, Albanian, Alsatian, Amis, Anuta, Aragonese, Aranese, Aromanian, Arrernte, Arvanitic (Latin), Asturian, Atayal, Aymara, Bashkir (Latin), Basque, Belarusian (Latin), Bemba, Bikol, Bislama, Bosnian, Breton, Cape Verdean Creole, Catalan, Cebuano, Chamorro, Chavacano, Chichewa, Chickasaw, Cimbrian, Cofán, Cornish, Corsican, Creek, Crimean Tatar (Latin), Croatian, Czech, Danish, Dawan, Delaware, Dholuo, Drehu, Dutch, English, Esperanto, Estonian, Faroese, Fijian, Filipino, Finnish, Folkspraak, French, Frisian, Friulian, Gagauz (Latin), Galician, Ganda, Genoese, German, Gikuyu, Gooniyandi, Guadeloupean Creole, Gwich'in, Haitian Creole, Hän, Hawaiian, Hiligaynon, Hopi, Hotcək (Latin), Hungarian, Ido, Igbo, Ilocano, Indonesian, Interglossa, Interlingua, Irish, Istro-Romanian, Italian, Jamaican, Javanese (Latin), Jèrriais, Kala Lagaw Ya, Kapampangan (Latin), Kaqchikel, Karakalpak (Latin), Karelian (Latin), Kashubian, Kikongo, Kinyarwanda, Kiribati, Kirundi, Klingon, Kurdish (Latin), Ladin, Latin, Latino sine Flexione, Latvian, Lithuanian, Lojban, Lombard, Low Saxon, Luxembourgish, Maasai, Makhuwa, Malay, Maltese, Manx, Māori, Marquesan, Megleno-Romanian, Meriam Mir, Mirandese, Mohawk, Moldovan, Montagnais, Montenegrin, Murrinh-Patha, Nagamese Creole, Nahuatl, Ndebele, Neapolitan, Ngiyambaa, Niuean, Noongar, Norwegian, Novial, Occidental, Occitan, Oshiwambo, Ossetian (Latin), Palauan, Papiamentu, Piedmontese, Polish, Portuguese, Potawatomi, Q'eqchi', Quechua, Rarotongan, Romanian, Romansh, Rotokas, Sami (Inari Sami), Sami (Lule Sami), Sami (Northern Sami), Sami (Southern Sami), Samoan, Sango, Saramaccan, Sardinian, Scottish Gaelic, Serbian (Latin), Seri, Seychellois Creole, Shawnee, Shona, Sicilian, Silesian, Slovak, Slovenian, Slovio (Latin), Somali, Sorbian (Lower Sorbian), Sorbian (Upper Sorbian), Sotho (Northern), Sotho (Southern), Spanish, Sranan, Sundanese (Latin), Swahili, Swazi, Swedish, Tagalog,

Tahitian, Tetum, Tok Pisin, Tokelauan, Tongan, Tshiluba, Tsonga, Tswana, Tumbuka, Turkish, Turkmen (Latin), Tuvaluan, Tzotzil, Uzbek (Latin), Venetian, Vepsian, Volapük, Võro, Wallisian, Walloon, Waray-Waray, Warlpiri, Wayuu, Welsh, Wik-Mungkan, Wiradjuri, Wolof, Xavante, Xhosa, Yapese, Yindjibarndi, Zapotec, Zulu, Zuni

File Formats

Available desktop font formats: OpenType/CFF (.otf extension), TrueType (.ttf extension)

We offer WebS, WebM and WebXL webfont files subsets – you will find them all in your package:

- WebS is a reduced and lighter font file suitable for most common web usages, containing only the Latin alphabet (without alternates, ligatures and OpenType features).
- WebM is the WebS subset + Cyrillic alphabet (without alternates, ligatures and OpenType features).
- WebXL is the complete font file containing all characters and languages (Latin, Cyrillic), including the many available only with OpenType functions and therefore not fully supported by all web browsers.

Available webfonts formats: .woff2, .woff, .eot, .ttf, .svg

The webfonts are manually optimized for ClearType rasterizers and above (DirectWrite), using TrueType hinting in vertical directions.

Available formats for App, EPUB, Broadcasting OpenType/CFF (.OTF extension)

Credits

Original typeface design by Ian Party / Swiss Typefaces
Font development and updates by Quentin Schmerber / Swiss Typefaces

Version

This PDF was generated on 21 November 2019

Contact

Swiss Typefaces
Quai Perdonnet 19
1800 Vevey
Switzerland

contact@swisstypefaces.com
www.swisstypefaces.com

The easiest licensing system.

swisstypefaces.com/support/licenses

Try before you buy (Trial version for print and web)

Buy the basic license and install the font
from up to 10 computers

Webfonts included, no extra charge

No media restrictions:
Unlimited amount of websites, merchandising, mobile
apps, electronic publications, broadcasting channels
or videos/films

One-time charge

No monthly fees

Lifelong license

No bandwidth restriction

No limited website visitors per month

Possibility to buy a license on behalf of your client

All available alphabets in one file

Free updates

Try before you buy

[swisstypefaces.com/fonts/sangbleu-og](https://www.swisstypefaces.com/fonts/sangbleu-og)

All our fonts are available as Trial versions in desktop (.otf) and webfont formats (.woff, .woff2). You can easily and legally test them on your computer, in your own design.

It is the most friendly and efficient way to evaluate fonts. Simply log in to your account and download them free of charge.

The Trial version of a font is reduced. It contains Latin alphabet with basic punctuation:

ABCDEFGHIJKLMNOPQRSTUVWXYZ
abcdefghijklmnopqrstuvwxyz' / - . ,

All collections and fonts are available in Trial version:
SangBleu OG Sans, SangBleu OG Serif,
SangBleu OG Condensed



 **Swiss Typefaces**