



KOPYME

1 font
Technical Documentation



1 font, Latin



KOPYME

KOPYME is a brutalist typeface with monospaced characters of monolinear stroke width and extra wide proportions. With the emphasis on extended horizontals, it channels a specifically Swiss lettering tradition that harkens back to works by Walter Käch from the 1930s and 1940s, and also materialized in the Haas Horizontal typeface by Helvetica designer Max Miedinger. In a futuristic variation on this theme, Swiss Typefaces introduces disturbingly top-heavy shapes with angular terminals, see 'C' or 'S'. KOPYME's strongly horizontal nature is offset by diagonals that shoot across the glyph space like laser beams. In letters like 'M' or 'Y', they crash through the baseline, extending the underlying grid by a fourth underground level, and adding to the typeface's kinetic energy.

You think this is fun? Wait till you've seen the OpenType extras. Switch on Stylistic Set 1 to pour a concrete base for your words: a fat underline that also creeps into the open counters. Activate Set 2, and all space above the cap height is filled up. Set 3 is a combination, with the characters locked between two solid rails. Change to Set 4: Here the center is filled and the letters are shown in negative. Only a few descenders manage to escape the dark mode. Last but not least, select Set 5 to see your words shredded by a stripe pattern – now you know how to typeset captchas in proper style.

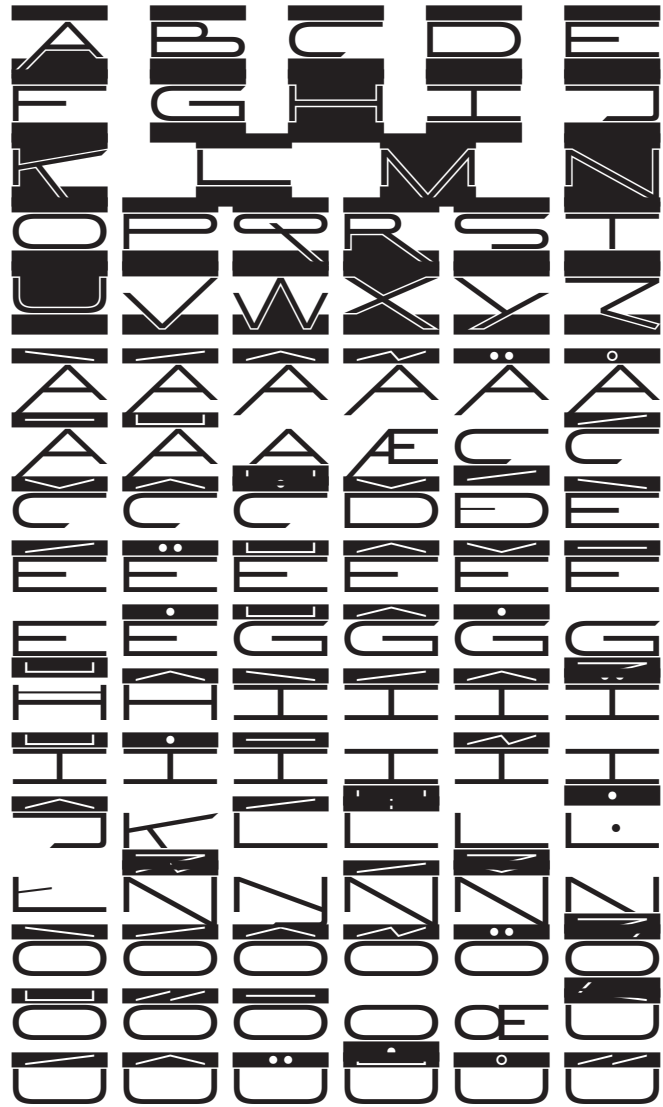
The typeface has a full character set including upper- and lowercase, accented characters, punctuation, and arrows. The special features are available for basic letters (Aa-Zz) and numerals. For the time being, it comes in a single style – KOPYME, Again.



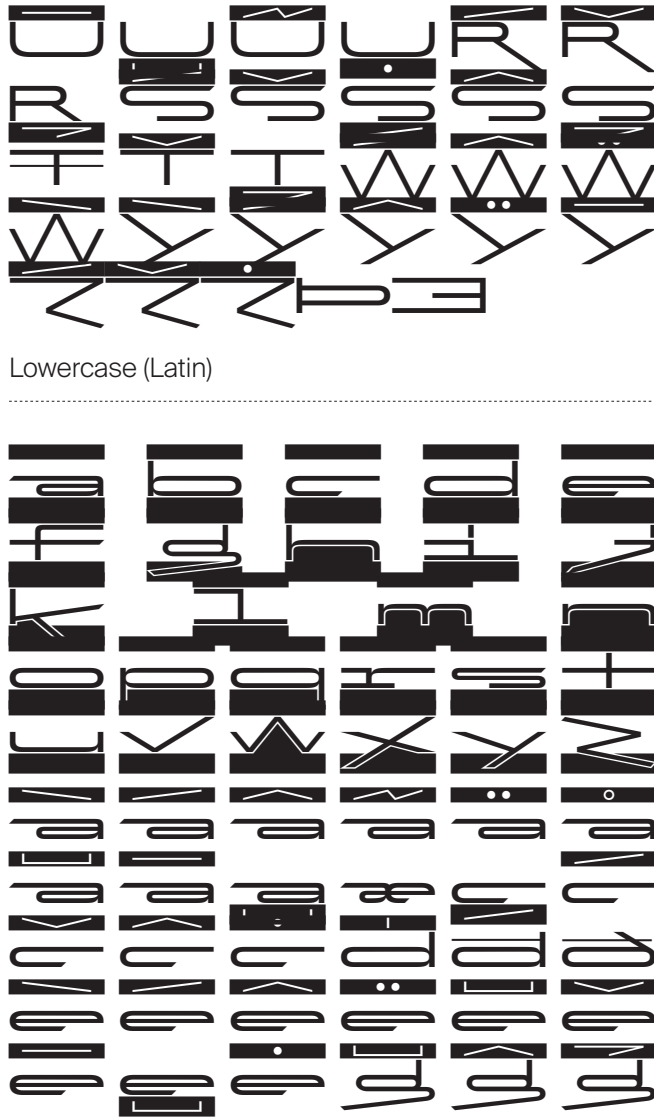
KOPYME OpenType Stylistic Sets Alternates



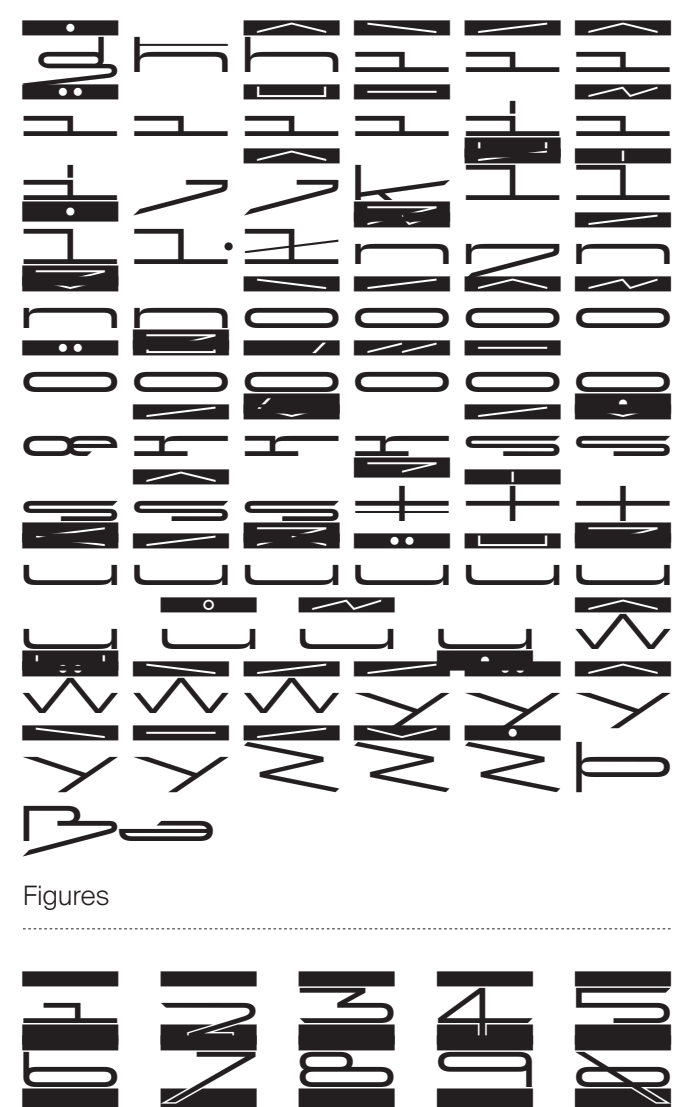
Uppercase (Latin)



Lowercase (Latin)



Figures



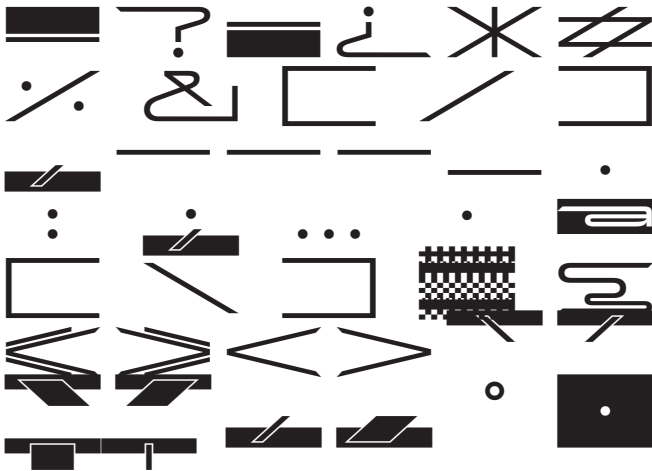
KOPYME Glyph Overview



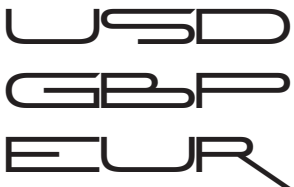
Standard Ligatures (Latin)



Punctuation



Currencies



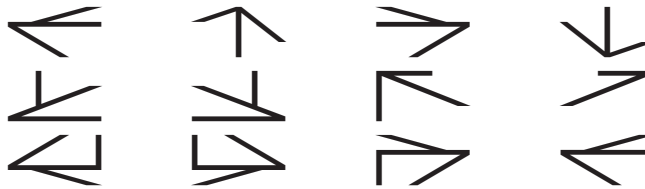
Symbol



Mathematical Signs



Arrows





OT Stylistic Set 1 : Down

A B C D E
F G H I J K
L M N O P Q R S T U
V W X Y Z
[\] ^ _ ` a b c d e
f g h i j k l m n o
p q r s t u v w x y z
{ | } ~

OT Stylistic Set 2 : Up

A B C D E
F G H I J K
L M N O P Q R S T U
V W X Y Z
[\] ^ _ ` a b c d e
f g h i j k l m n o
p q r s t u v w x y z
{ | } ~

OT Stylistic Set 3 : DownUp

A B C D E
F G H I J K
L M N O P Q R S T U
V W X Y Z
[\] ^ _ ` a b c d e
f g h i j k l m n o
p q r s t u v w x y z
{ | } ~



OT Stylistic Set 4 : Center

A B C D E F
G H I J K L
M N O P Q R
S T U V W X
Y Z

a b c d e f
g h i j k l
m n o p q r
s t u v w x
y z

1 2 3 4 5 6
7 8 9 0

OT Stylistic Set 5 : Glitch

A B C D E F
G H I J K L
M N O P Q R
S T U V W X
Y Z

a b c d e f
g h i j k l
m n o p q r
s t u v w x
y z

1 2 3 4 5 6
7 8 9 0

Again 83 pt

SUBJECT

Again 40 pt

EVERYTHING
OUT OF THE
THROAT.
THROAT

Again 17 pt

From morning to
evening my day ran
like clockwork to a
schedule that would

KOPYME Typeface Information

Supported languages

Latin: Abenaki, Afaan Oromo, Afar, Albanian, Alsatian, Amis, Anuta, Aragonese, Aranese, Aromanian, Arrernte, Arvanitic (Latin), Asturian, Atayal, Aymara, Bashkir (Latin), Basque, Belarusian (Latin), Bemba, Bikol, Bislama, Bosnian, Breton, Cape Verdean Creole, Catalan, Cebuano, Chamorro, Chavacano, Chichewa, Chickasaw, Cimbrian, Cofán, Cornish, Corsican, Creek, Crimean Tatar (Latin), Croatian, Czech, Danish, Dawan, Delaware, Dholuo, Drehu, Dutch, English, Esperanto, Estonian, Faroese, Fijian, Filipino, Finnish, Folkspraak, French, Frisian, Friulian, Gagauz (Latin), Galician, Ganda, Genoese, German, Gikuyu, Gooniyandi, Guadeloupean Creole, Gwich'in, Haitian Creole, Hän, Hawaiian, Hiligaynon, Hopi, Hotçak (Latin), Hungarian, Ido, Igbo, Ilocano, Indonesian, Interglossa, Interlingua, Irish, Istro-Romanian, Italian, Jamaican, Javanese (Latin), Jèrriais, Kala Lagaw Ya, Kapampangan (Latin), Kaqchikel, Karakalpak (Latin), Karelian (Latin), Kashubian, Kikongo, Kinyarwanda, Kiribati, Kirundi, Klingon, Kurdish (Latin), Ladin, Latin, Latino sine Flexione, Latvian, Lithuanian, Lojban, Lombard, Low Saxon, Luxembourgish, Maasai, Makhuwa, Malay, Maltese, Manx, Māori, Marquesan, Megleno-Romanian, Meriam Mir, Mirandese, Mohawk, Moldovan, Montagnais, Montenegrin, Murrinh-Patha, Nagamese Creole, Nahuatl, Ndebele, Neapolitan, Ngiyambaa, Niuean, Noongar, Norwegian, Novial, Occidental, Occitan, Oshiwambo, Ossetian (Latin), Palauan, Papiamento, Piedmontese, Polish, Portuguese, Potawatomi, Q'eqchi', Quechua, Rarotongan, Romanian, Romansh, Rotokas, Sami (Inari Sami), Sami (Lule Sami), Sami (Northern Sami), Sami (Southern Sami), Samoan, Sango, Saramaccan, Sardinian, Scottish Gaelic, Serbian (Latin), Seri, Seychellois Creole, Shawnee, Shona, Sicilian, Silesian, Slovak, Slovenian, Slovio (Latin), Somali, Sorbian (Lower Sorbian), Sorbian (Upper Sorbian), Sotho (Northern), Sotho (Southern), Spanish, Sranan,

Sundanese (Latin), Swahili, Swazi, Swedish, Tagalog, Tahitian, Tetum, Tok Pisin, Tokelauan, Tongan, Tshiluba, Tsonga, Tswana, Tumbuka, Turkish, Turkmen (Latin), Tuvaluan, Tzotzil, Uzbek (Latin), Venetian, Vepsian, Volapük, Võro, Wallisian, Walloon, Waray-Waray, Warlpiri, Wayuu, Welsh, Wik-Mungkan, Wiradjuri, Wolof, Xavante, Xhosa, Yapese, Yindjibarndi, Zapotec, Zulu, Zuni

File Formats

Available desktop font formats: OpenType/CFF (.otf extension), TrueType (.ttf extension)

We offer WebS and WebXL webfont files subsets – you will find them all in your package:

- WebS is a reduced and lighter font file suitable for most common web usages, containing only the Latin alphabet (without alternates, ligatures and OpenType features).
- WebXL is the complete font file containing all characters, including the many available only with OpenType functions and therefore not fully supported by all web browsers.

Available webfonts formats: .woff2, .woff, .eot, .ttf, .svg

The webfonts are manually optimized for ClearType rasterizers and above (DirectWrite), using TrueType hinting in vertical directions.

Available formats for App, EPUB, Broadcasting OpenType/CFF (.OTF extension)

Credits

Art direction by Swiss Typefaces
Based on BRRR typeface
Design by Liudmila Bredikhina / Swiss Typefaces

Version

This PDF was generated on 21 November 2019

Contact

Swiss Typefaces
Quai Perdonnet 19
1800 Vevey
Switzerland

contact@swisstypefaces.com
www.swisstypefaces.com

The easiest licensing system.

swisstypefaces.com/support/licenses

Try before you buy (Trial version for print and web)

Buy the basic license and install the font
from up to 10 computers

Webfonts included, no extra charge

No media restrictions:
Unlimited amount of websites, merchandising, mobile
apps, electronic publications, broadcasting channels
or videos/films

One-time charge

No monthly fees

Lifelong license

No bandwidth restriction

No limited website visitors per month

Possibility to buy a license on behalf of your client

All available alphabets in one file

Free updates

Try before you buy

[swisstypefaces.com/lab](https://www.swisstypefaces.com/lab)

All our fonts are available as Trial versions in desktop (.otf) and webfont formats (.woff, .woff2). You can easily and legally test them on your computer, in your own design.

It is the most friendly and efficient way to evaluate fonts. Simply log in to your account and download them free of charge.

The Trial version of a font is reduced. It contains Latin alphabet with basic punctuation:





 **Swiss Typefaces**